

LB and LBV

Used for adapting standard .2500 or .1250 shank targets to odd-sized holes. (Allow .2000 for height difference) Many nominal fractional sizes in stock.

LB ORDERING INFORMATION

	FAMILY	"A" OUTSIDE DIAMETER	MATERIAL				
LB STANDARD BUILD	LB	↓	1144 steel, black oxide finish				
CUSTOMER PROVIDES INFO	LB	▪					

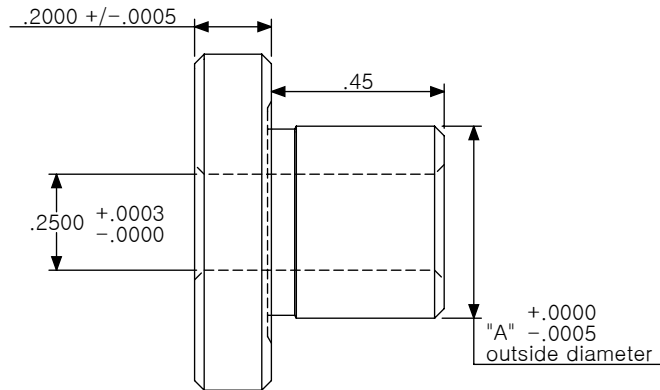
LBV ORDERING INFORMATION

	FAMILY	"A" OUTSIDE DIAMETER	"B" SHANK LENGTH	"C" SHOULDER WIDTH	"D" SHOULDER DIAMETER	MATERIAL	
LBV STANDARD BUILD	LBV	↓	↓	↓	↓	1144 steel, black oxide finish	
CUSTOMER PROVIDES INFO	LBV	▪	▪	▪	▪		

REFERENCE NOTES

LINER BUSHING

CAD on file



NOTE

For head diameter, add .375 to "A" diameter.



LB FEATURES

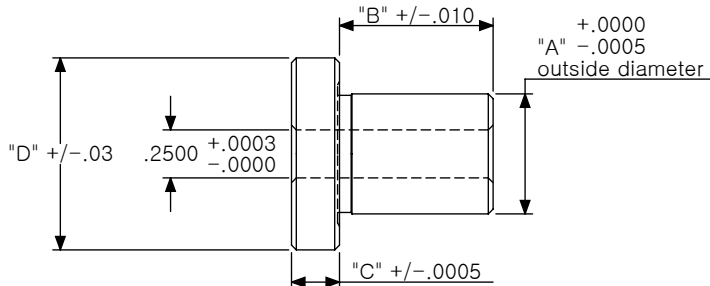
1144 STEEL, BLACK OXIDE FINISH (standard)

LB ORDERING

Can only select outside diameter.

LINER BUSHING VARIABLE

CAD on file



LBV FEATURES

1144 STEEL, BLACK OXIDE FINISH (standard)

TLB
Used for adapting standard .2500 or .1250 shank targets to threaded holes.
(Allow .2000 for height difference)

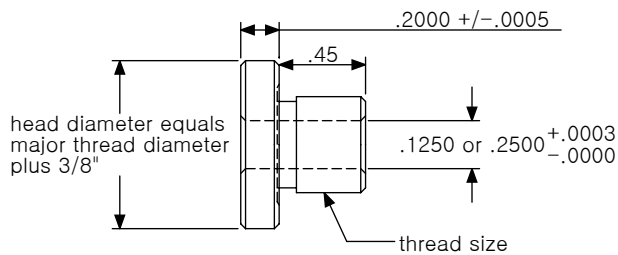
TLB ORDERING INFORMATION						
	FAMILY	"A" THREAD SIZE	MATERIAL			
TLB STANDARD BUILD	TLB	↓	1144 steel, black oxide finish			
CUSTOMER PROVIDES INFO	TLB	▪				

TLBV
Used for adapting standard .2500 or .1250 shank targets to threaded holes.
(Allow .2000 for height difference)

TLBV ORDERING INFORMATION						
	FAMILY	"A" THREAD SIZE	"B" SHANK LENGTH	"C" HEAD THICKNESS	"D" SHOULDER DIAMETER	MATERIAL
TLBV STANDARD BUILD	TLBV	↓	↓	↓	↓	1144 steel, black oxide finish
CUSTOMER PROVIDES INFO	TLBV	▪	▪	▪	▪	
REFERENCE NOTES	_____					

THREADED LINER BUSHING

CAD on file



NOTE

For .1250 diameter hole, +.0003/- .0000 for major thread diameter .375 and less.

.2500 diameter hole, +.0003/- .0000 for major thread diameter over .375

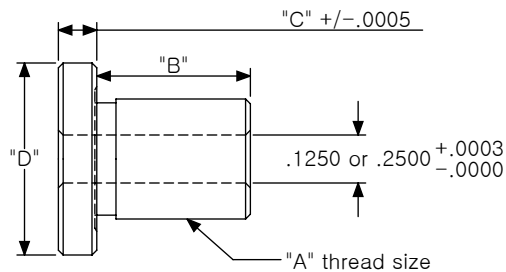


TLB FEATURES
1144 STEEL, BLACK OXIDE FINISH (standard)

TLB ORDERING
Insert desired thread size as example:
LB - 1/4 - 20

THREADED LINER BUSHING VARIABLE

CAD on file



NOTE

For .1250 diameter hole, +.0003/- .0000 for major thread diameter .375 and less.

.2500 diameter hole, +.0003/- .0000 for major thread diameter over .375



TLBV FEATURES
1144 STEEL, BLACK OXIDE FINISH (standard)

HDLB

Used for adapting standard .2500 or .1250 shank targets to standard type slotted bushings. (Allow .1875 for height difference)

HDLB ORDERING INFORMATION

	FAMILY	"A" DIMENSION "FLATS"	"B" DIMENSION DIAMETER	MATERIAL			
HDLB STANDARD BUILD	HDLB	↓	↓	1144 steel, black oxide finish			
CUSTOMER PROVIDES INFO	HDLB	■	■				
REFERENCE NOTES							

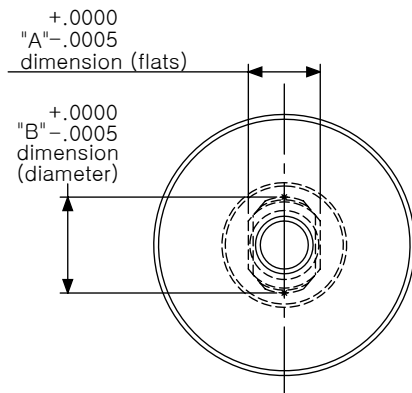
HEADED DIAMOND LINER BUSHING

CAD on file

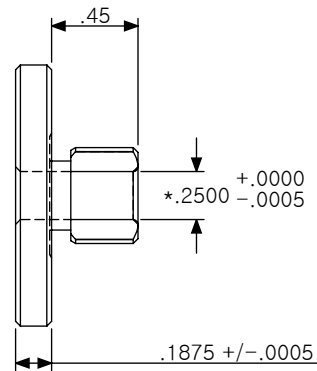
D
3

NOTE

.1250 hole when "A" dimension (flats) is less than .3120



target hole on c/l of "A" dimension and "B" dimension within +/- .0005



HDLB FEATURES

1144 STEEL, BLACK OXIDE FINISH (standard)

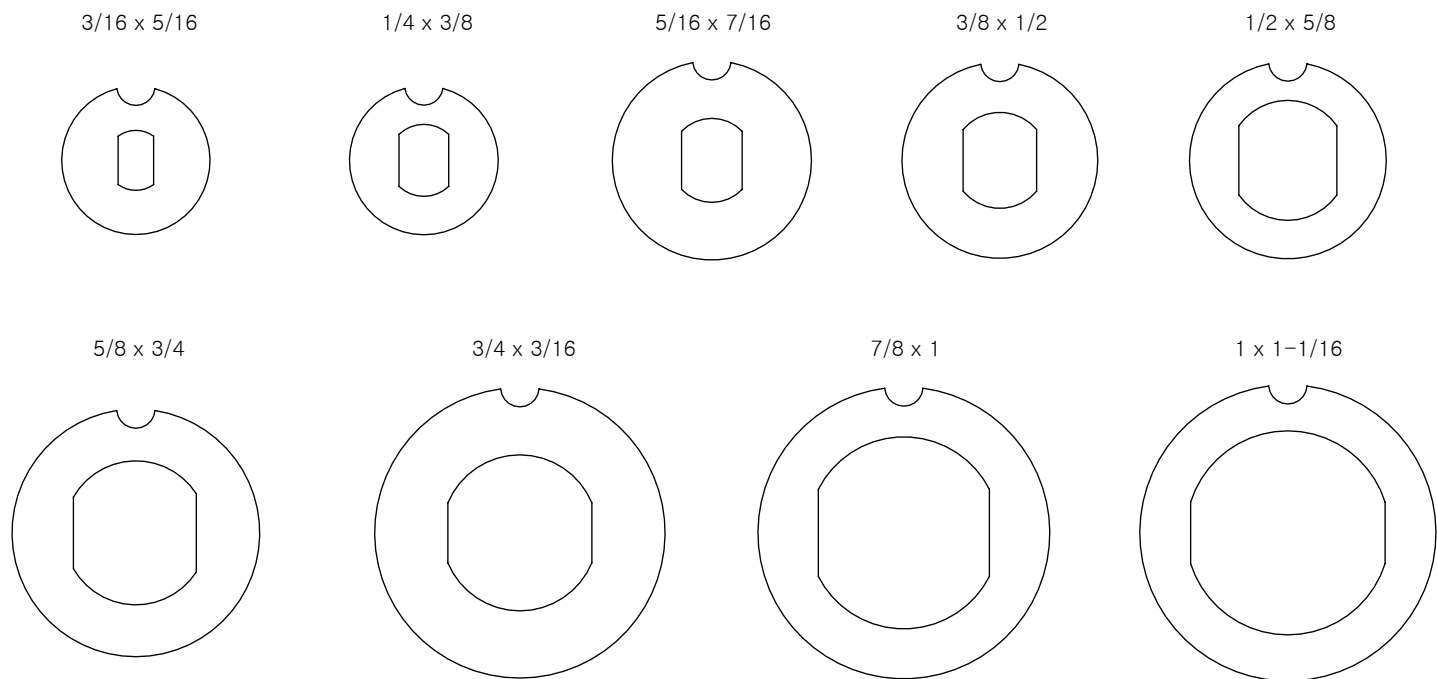
HDLB ORDERING

.1250 hole when "A" dimension (flats) is less than .3120

HEADED DIAMOND LINER BUSHING REFERENCE

NOMINAL SIZES FOR
EXAMPLE ONLY

Actual dimensions will
be .0005 smaller than
the fractional sizes
shown below.



D
4

HEADED DIAMOND LINER BUSHING NOTES

FOR BEST RESULTS
WE RECOMMEND:

- Make sure that the slotted bushing slot and locating surface around slotted bushing is clean.
- Make sure locating surface around slotted bushing and the inside edges of the slotted bushing are free of burrs. Burrs inside the slot may not allow the HDLB to fit freely and may cause damage to the HDLB if not removed.
- Standard HDLB's are .0005 to .0010 of an inch under the nominal length and width sizes for minimal clearance. A light coat of grease around the diamond locating areas will help the HDLB to center themselves within the normal minimal clearance.
- We suggest using a .3125 high targeting in conjunction with the .1875 head thickness of the HDLB to achieve a .500 offset.

HDLBV

Allows the end user to custom design the bushing for a specific need.

HDLBV ORDERING INFORMATION

FAMILY	"A" DIMENSION "FLATS"	"B" DIMENSION DIAMETER	"C" SHANK LENGTH	"D" HEAD THICKNESS	"E" HEAD DIAMETER	"F" FLAT LENGTH
HDLBV STANDARD BUILD	HDLBV	↓	↓	↓	↓	↓
CUSTOMER PROVIDES INFO	HDLBV	▪	▪	▪	▪	▪
REFERENCE NOTES						

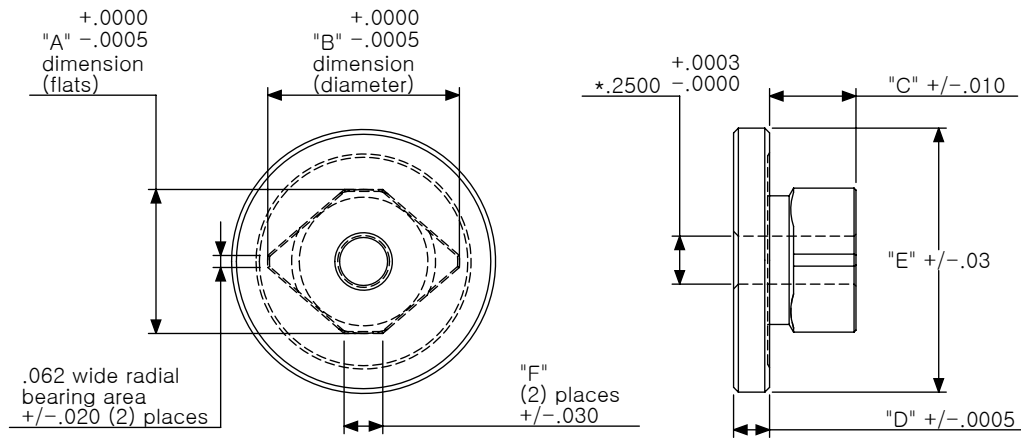
HEADED DIAMOND LINER BUSHING VARIABLE

CAD on file

D
5

NOTE

.1250 hole when "A" dimension (flats) is less than .3120



HDLBV FEATURES
1144 STEEL, BLACK OXIDE FINISH (standard)

HDLBV ORDERING
.1250 hole when "A" dimension (flats) is less than .3120